

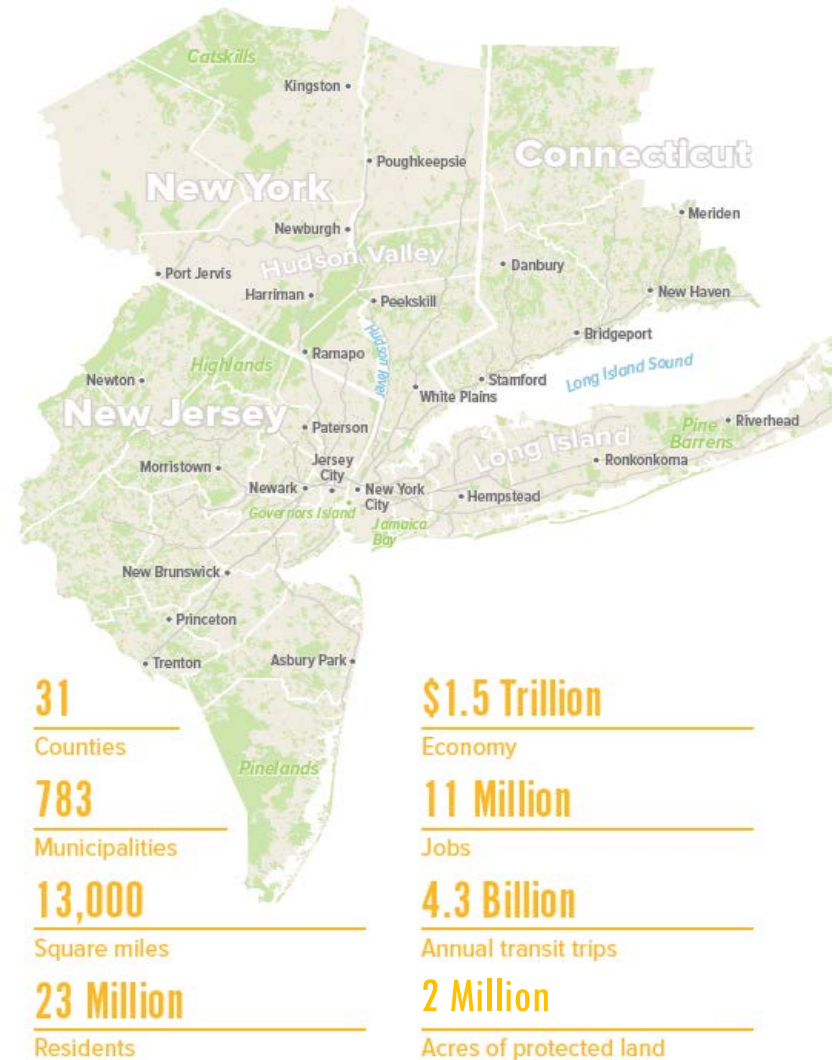


New York's Next Comeback

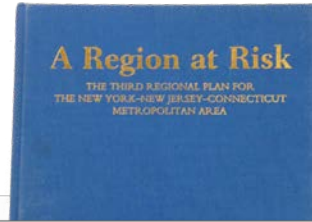
Tom Wright, President
Regional Plan Association
November 18, 2020

RPA is a non-profit research, planning, and advocacy organization.

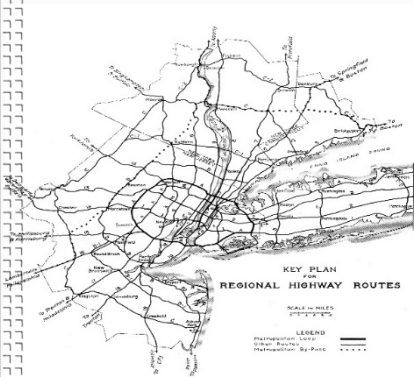
We are dedicated to improving the New York metropolitan region's economic health, environmental sustainability, and quality of life.



The Four Regional Plans



1929
First Regional Plan



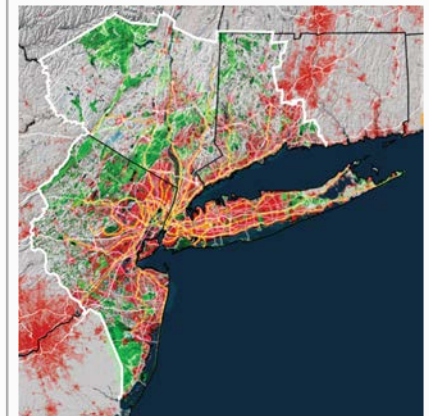
1968
Second Regional Plan



1996
Third Regional Plan



2017
Fourth Regional Plan



Purpose of our Report



- Correct misinformation
- Put the crisis in historical and global context
- Put the city in a regional context
- Create a narrative that focuses on ***how*** rather than ***whether*** the region recovers
- Set the stage for future recommendations using the Fourth Regional Plan as a framework

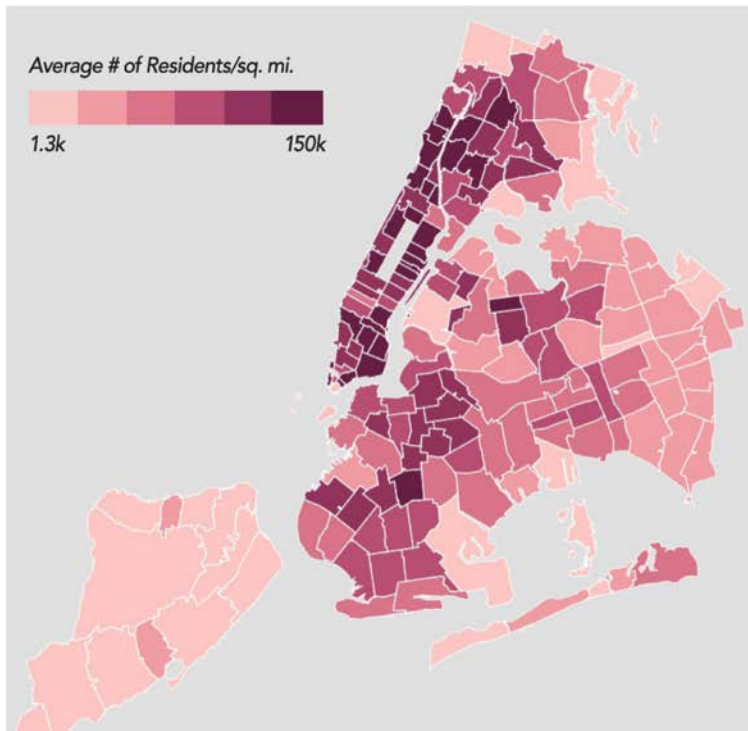
Common Mistakes to Avoid

- Mistaking short-term disruptions for new paradigms
- Thinking of city and suburbs as a zero-sum game
- Assuming a rising tide will lift all boats
- Recreating the past instead of envisioning the future

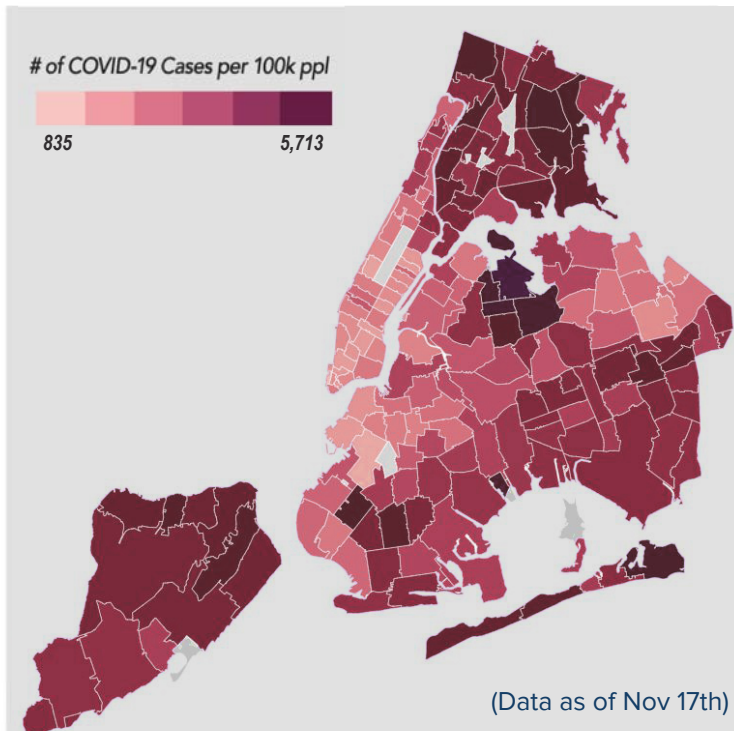


Urban density does not spread the Coronavirus

Residential Population Density in NYC

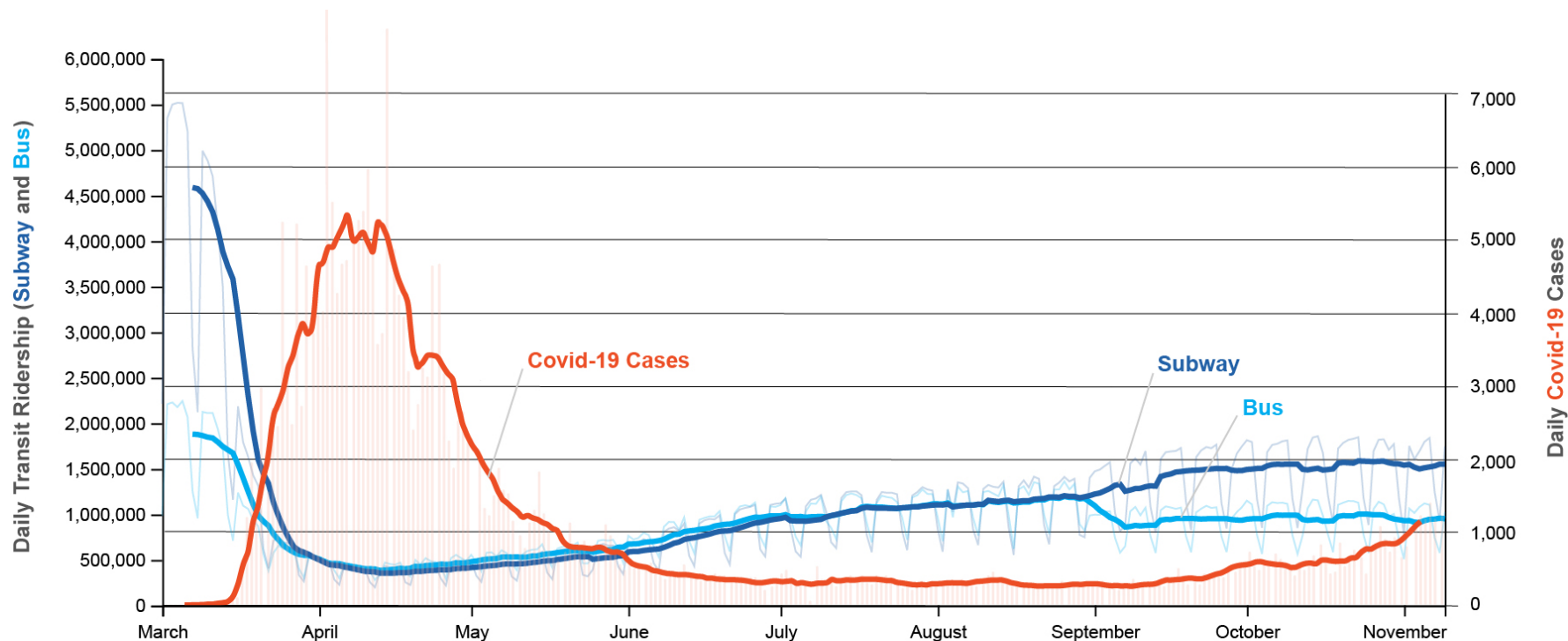


COVID-19 Case Rates by Zip Code



Source: NYC Department of Health & Citizens Housing & Planning Council

Daily NYC Transit Riders and Covid-19 Cases

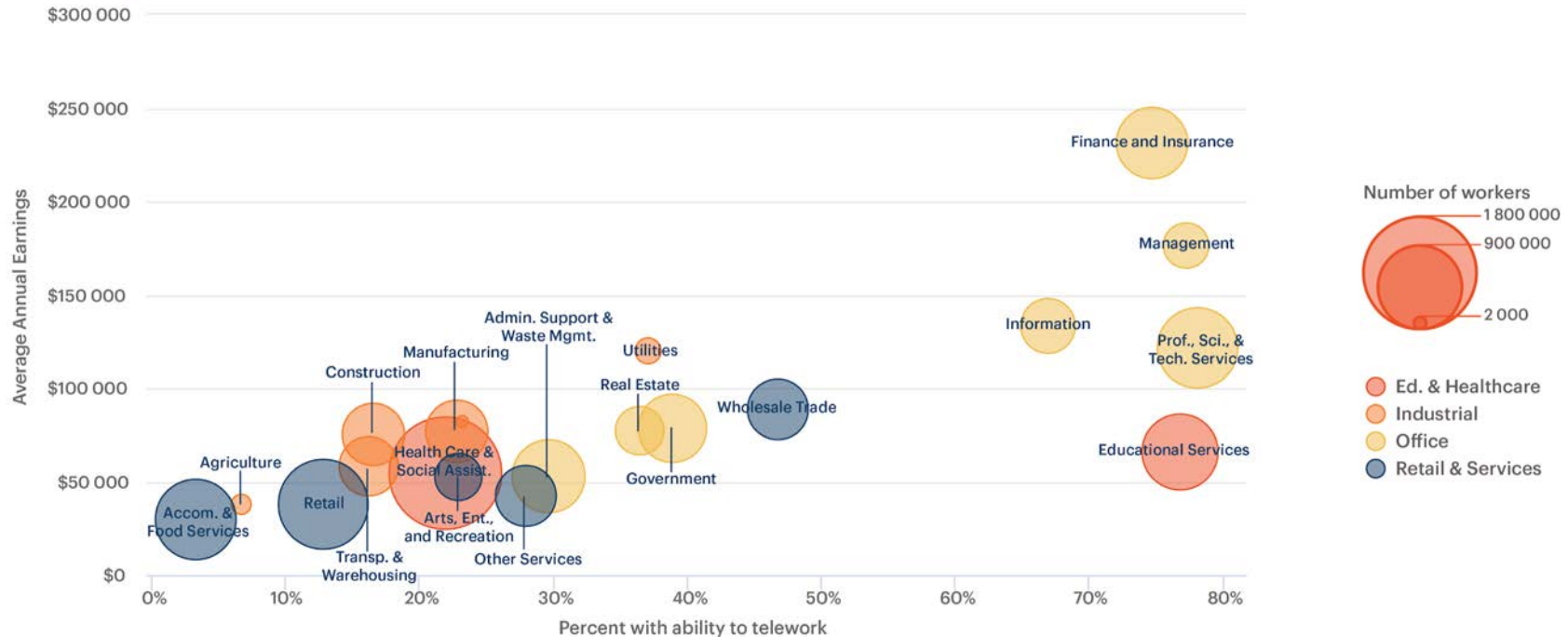


MTA daily ridership numbers (via Oldenburg.design) and daily Covid-19 cases in New York City from State and local-level public health agencies (via USA FACTS)
Trendlines calculated as seven day moving averages.

Working and learning from home is here to stay, but the impacts are unclear

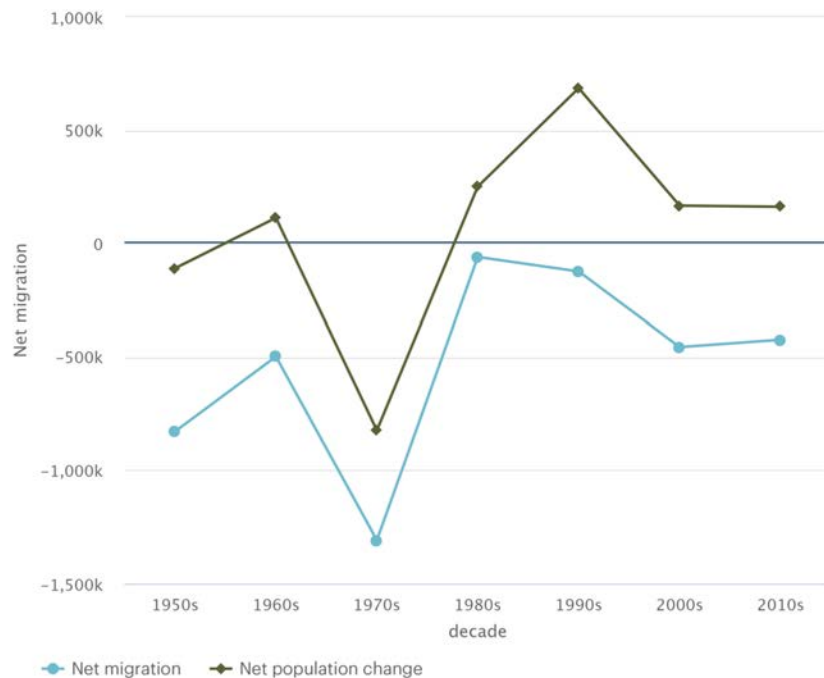
Ability to telework and average annual earnings, by industry

NY-NJ-CT Region



The surge in people leaving NYC is driven by both temporary and potentially long-term forces

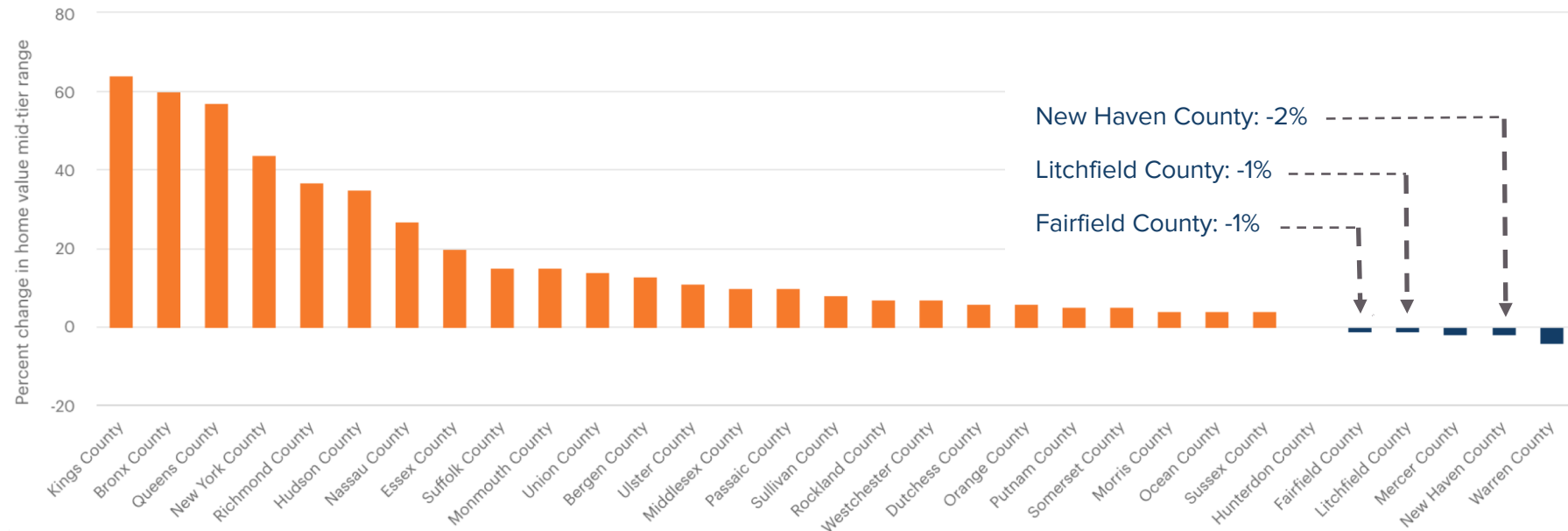
Net migration, New York City



Cost differential between NYC and the rest of the region is likely to narrow

Change in Home Value by County, June 2010 - June 2020

Seasonally adjusted measure of the typical home value and market changes across the region. It reflects the typical value for homes in the 35th to 65th national percentile range, including single family residences, condos, and co-ops.



Source: Zillow Home Value Index (ZHVI)

Threats that could deepen the downturn and make it harder to recover



- Downward fiscal spiral causes deteriorating services and infrastructure
- Widespread evictions and business failures
- Perception that New York City is unhealthy and unsafe

FIGHTING COVID-19

Download the
app, stop the
spread.



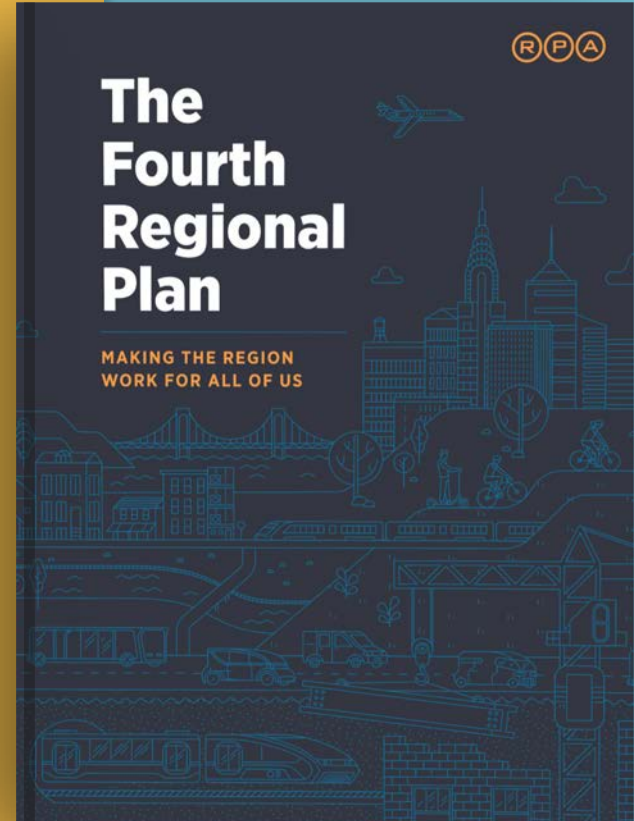
5 Reasons to bet on New York and the Region

1. Urban density is still an advantage
2. Diversity and talent drive success
3. Many of our unique assets can't be replicated
4. New businesses and households will seize opportunities
5. We have a wake up call to address structural problems



The Fourth Regional Plan provides a framework for recovery and renewal

- Health, Equity, Prosperity, Sustainability
- Fix institutions and structural inequities
- Save and modernize transit
- Design streets for people
- Affordable broadband for all
- Resilience to climate change and health hazards
- Transcend municipal and state boundaries



Want to get involved?

Join our mailing list for the latest information on research, advocacy, and events at RPA.

Become a member for exclusive invitations, member updates, and more.

Learn more at rpa.org



Association works toward a
the tri-state region

[the latest](#)

[about](#)

[contact](#)

[search](#)



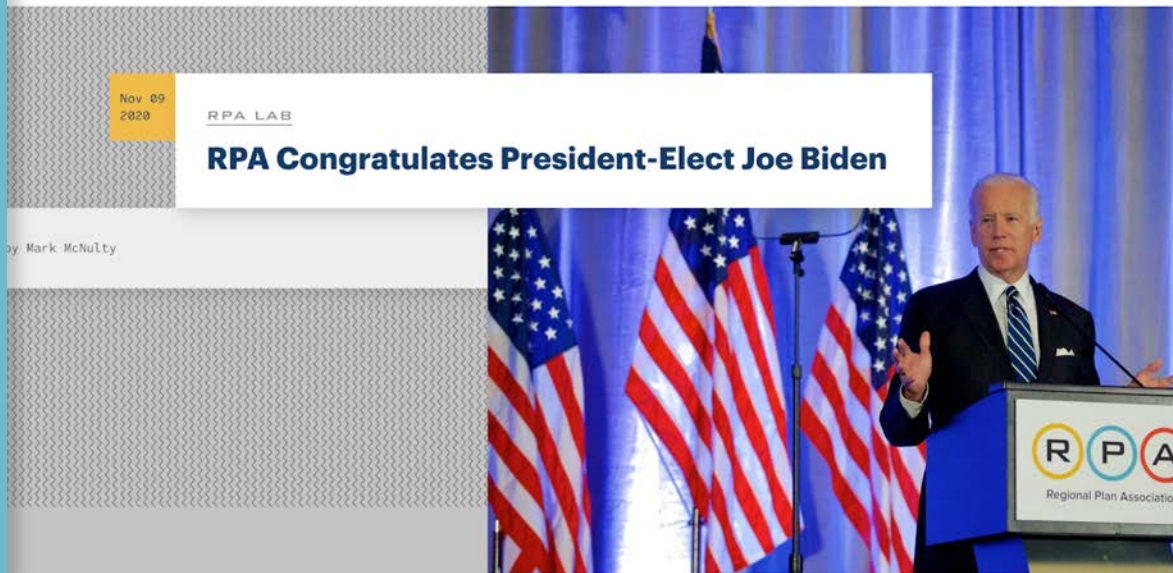
[Our Work](#) [Our Region](#) [Events](#) [Support](#)

Nov 09
2020

RPA LAB

RPA Congratulates President-Elect Joe Biden

by Mark McNulty



share



Regional Plan Association congratulates US President-elect Joseph R. Biden for earning the votes of a majority of Americans and winning the 2020 presidential election.

In 2017 at RPA's annual Assembly, President-Elect Biden delivered a keynote address and accepted RPA's John Zuccotti Award, our organization's highest award for